

NEW! Ultra-Low Frequency MK26 Workstation



Features/Benefits:

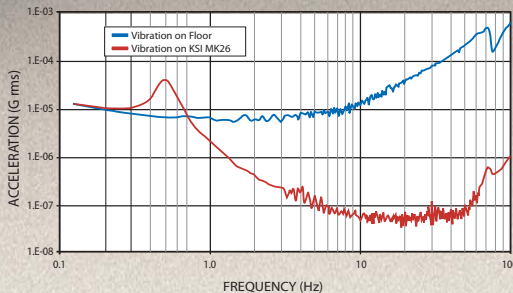
- Ultra-low natural frequencies
- Vibradamped frame
- Customizable accessories
- Choice of tabletops
- Ergonomic style
- Class 100 cleanroom compatible
- Class 10 available

Introducing the MK26, the versatile New Vibration Isolation Workstation for ultra-low natural frequency applications. The Kinetic Systems MK26 Vibration Isolation Workstation utilizes Minus K[®] patented negative-stiffness vibration isolators to provide a compact, passive workstation with ultra-low natural frequencies, higher internal structural frequencies, and excellent vertical and horizontal isolation efficiencies.

The Minus K[®] vertical isolator uses a stiff spring and a negative-stiffness mechanism to achieve a low net vertical stiffness without affecting the static load supporting capability. Horizontal isolation is provided by beam columns connected in series with the vertical-motion isolator. Adjusted to a 1/2/Hz natural frequency, the workstation achieves 93% isolation efficiency at 2 Hz, 99% at 5 Hz, and 99.7% at 10 Hz.

The workstation can be configured for a wide variety of applications, and customized with guard rails, padded armrests, overhead equipment shelves, monitor stands, non-isolated shelves for supporting equipment off the tabletop, oversized keyboard shelves, retractable casters, Faraday Cages to protect sensitive operations from electromagnetic interference, tabletop enclosures to protect against harsh manufacturing environments, and electrical accessories such as outlet strips for lighting.

ISOLATION
93% at 2 Hz
99% at 5 Hz
99.7% at 10 Hz



Ordering Information

MK26 [] [] - [] [] - [] []

Gross Load Capacity
01 = Up to 250 lbs
02 = Up to 350 lbs
03 = Up to 500 lbs
04 = Up to 650 lbs

Tabletop Size
01 = 30" x 36"
22 = 36" x 48"*

*Only available on models with Gross Load Capacities of 500 lbs or more

Tabletop Description

Tabletop Description	Weight lbs/sq.in (kg/sq.m)
21 = 2" (51mm) Composite w/white plastic laminate	.14 (98)
22 = 2" (51mm) Composite w/stainless laminate	
23 = 2" (51mm) Composite w/black plastic laminate	
24 = 2" (51mm) Composite w/anti-static laminate	
40 = 2" (51mm) Honeycomb/no holes	.12 (84)
45 = 2" (51mm) SPILLPRUF Honeycomb 1/4-20 x1"centers	
46 = 2" (51mm) SPILLPRUF Honeycomb M6 x 25mm centers	

Special capacities and tabletop sizes available

Specifications

Max. Load Capacity	650 lbs.
Max. Width of Tabletop	48"
Max. Depth of Tabletop	36"
Vertical Natural Frequency	0.5 Hz
Horizontal Natural Frequency	0.5 Hz
Isolation Efficiency @ 2Hz	93%
Isolation Efficiency @ 5Hz	99%
Isolation Efficiency @ 10Hz	99.7%

*Minus K is a registered trademark of Minus K Technology, Inc.